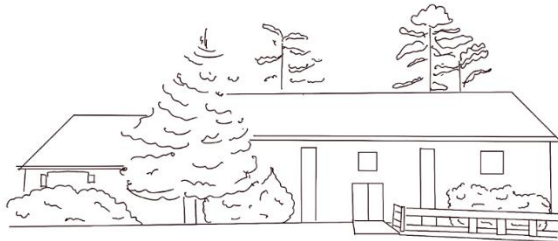


WHY ST. JAMES?

19256 Three Notch Road, Lexington Park, MD 20653

We believe that this is more than just a building. It's an opportunity to make a difference for good and for God in St. Mary's County.

- **Proximity to PAX River assures continued outreach to the Base population**
- **1 mile to Spring Ridge Middle School, opens doors for ministry to students and families**
- **2 miles to St. Mary's College, allows for development of college-career ministry**
- **12-acre lot creates opportunities for expansion and outdoor events**
- **A kitchen – hello potlucks, community dinners, after-school programs, soup kitchen, etc.**
- **Location – Easily accessible on Route 235, near to Elms Beach and additional recreational attractions**
- **Price – leaves margin for near-term renovations and long-term expansion**
- **A reliable place to call home – no setting up and tearing down**



WHY ST. JAMES?

19256 Three Notch Road, Lexington Park, MD 20653

We believe that this is more than just a building. It's an opportunity to make a difference for good and for God in St. Mary's County.

- **Proximity to PAX River assures continued outreach to the Base population**
- **1 mile to Spring Ridge Middle School, opens doors for ministry to students and families**
- **2 miles to St. Mary's College, allows for development of college-career ministry**
- **12-acre lot creates opportunities for expansion and outdoor events**
- **A kitchen – hello potlucks, community dinners, after-school programs, soup kitchen, etc.**
- **Location – Easily accessible on Route 235, near to Elms Beach and additional recreational attractions**
- **Price – leaves margin for near-term renovations and long-term expansion**
- **A reliable place to call home – no setting up and tearing down**

